

A

B

C

D

E

OPW PRODUCT	COMPACT TORSION SPRING
PRODUCT	PETROLEUM
OPERATING TEMPERATURE	-20F TO 250F
MATERIALS OF CONSTRUCTION	CARBON STEEL BASE / ALUMINUM BODY
SWIVEL JOINT SEALS	FLUOROCARBON GFLT
FLANGE GASKETS	N/A
ESTIMATED WEIGHT	120LBS
MOMENT LOAD AT SPRING	10,000 IN-LBS MAX
TEST PRESSURE	90 PSI
RADIOGRAPHIC INSPECTION	5% FLOW PASSAGE WELDS
VISUAL INSPECTION	5% FLOW PASSAGE WELDS
MATERIAL TEST REPORTS REQUIRED	NO
BONDING JUMPERS REQUIRED	NO/YES
DESIGNED FOR PRODUCT RETENTION	YES

THIS DRAWING IS NOT TO BE SCALED. FOR ADDITIONAL INFORMATION, PLEASE CONTACT OUR ENGINEERING DEPT.

REVISIONS					
LTR	ECN #	DESCRIPTION	DRAWN	APPROVED	DATE
REL	42362	RELEASE	JSC		-

ITEM	QTY	UM	PART NUMBER	DESCRIPTION
40	2	EA	H33042M	BOLT, HEX, ZP, 3/8-16 x 2.75
39	2	EA	H33012M	6" O-RING, FLUOROCARBON, #259
38	1	EA	H32954M	CTS, H-BLOCK, BODY SWIVEL
37	1	EA	H32953M	PETROLEUM SWIVEL, H-BLOCK, BASE SWIVEL
36	2	EA	H32527M	4", SEAL, FLUOROCARBON, DUAL RACE #245
35	1	EA	H32482M	4", CTS, PLUG, ALUM, DUAL RACE
34	1	EA	H32481M	NAMEPLATE, CTS
33	1	EA	H32463M	4" CTS, SNUBBER RETAINER, BRASS 7/8-14 X .50"
32	1	EA	H32462M	4", CTS, SNUBBER PLUNGER, SST, 11/16" DIA. X 1.40" LG
31	4	EA	H32461M	DISC SPRING, .750" MAX. OD X .380" MIN. ID, SST
30	1	EA	H32426M	WASHER, FLAT, SINTERED BRONZE
29	1	EA	H32424M	4", SEAL, FLUOROCARBON, DUAL RACE, #163
28	8	EA	H32417M	3/8"-16 X 7/8" LNG, FLAT HEAD SOCKET CAP, CST
27	2	EA	H32415M	4", SEAL, FLUOROCARBON, #113
26	2	EA	H32414M	.88 INCH, RETAINING RING, CST
25	1	EA	H32409M	.125 X .125 X 1.46 LONG, KEY, CST
24	1	EA	H32406M	4", CTS, RH SPRING, CST
23	1	EA	H32405M	.750 X .500 X 1.125 LONG, BRONZE BUSHING
22	100	EA	H32404M	8MM, GRADE 25 BALL, CHROME STEEL
21	96	EA	H32403M	12MM, GRADE 25 BALL, CHROME STEEL
20	1	EA	H32402M	4", SEAL, FLUOROCARBON, DUAL RACE, #249
19	1	EA	H32401M	4", SEAL, FLUOROCARBON, DUAL RACE, #262
18	1	EA	H32399M	WORM GEAR SET
17	1	EA	H31916M	PLUG, HEX-SOCKET, 316 SST, 1/8" NPT
16	8	EA	H31404M	BOLT, HEX, ZP, 3/8-16 x 1, 8
15	18	EA	H30134M	LOCK WASHER, CST, ZP, REGULAR, 3/8" BOLT
14	8	EA	H30133M	BOLT, HEX, ZP, 3/8-16 x 1-1/2, 8
13	6	EA	H-32149-M	SCREW, PH, ZP, 6-20 x 3/16
12	2	EA	H-31396-M	SPIROL PIN
11	1	EA	H-30823-M	GREASE FITTING, SST, 1/8 NPT
10	1	EA	E20134RS	4", PS, BODY, CST, DUAL RACE
9	1	EA	E20131AH	4", CTS, TAIL, ALUM, DUAL RACE
8	1	EA	E20130AH	4", CTS, BODY, DUAL RACE, LEFT HAND
7	1	EA	E20129AH	4", PS, END PLATE, ALUM, DUAL RACE
6	1		C21539RS	4", PS, TANG PLATE, CST, DUAL RACE
5	1	EA	C21537RS	4", PS, STOP BLOCK, CST, DUAL RACE
4	2	EA	C21536AH	12MM, BALL PLUG, ALUM, DUAL RACE
3	2	EA	C21535AH	8MM, BALL PLUG, ALUM, DUAL RACE
2	1	EA	C21534RS	4", PS, SHAFT, CST, DUAL RACE
1	1	EA	C21533RS	4", PS, TAIL, CST, DUAL RACE

1

2

3

4

5


1

2

3

4

5

<b>CONFIDENTIAL</b>			THIS DOCUMENT CONTAINS INFORMATION WHICH IS PROPRIETARY TO OPW, AND SHOULD BE PROTECTED ACCORDINGLY			DESCRIPTION: 4", CTS, ASSEMBLY, RIGHT HAND, DUAL RACE			
PRODUCT LINE:		SIGNATURES		DD-MMM-YYYY		REV:			
SWIVEL		DRAWN: JSC		01-Aug-2017		REL		PART NUMBER:	
WEIGHT:		CHECKED:				SIZE:		C	
114#		MATERIAL:		CST / ALUM		SCALE: 0.350		SHEET 1 OF 3	
							<b>CT50RH-0402</b>		 OPW ENGINEERED SYSTEMS A DOVER Company Lebanon, Ohio 45036 USA 3D GENERATED DRAWING

A

B

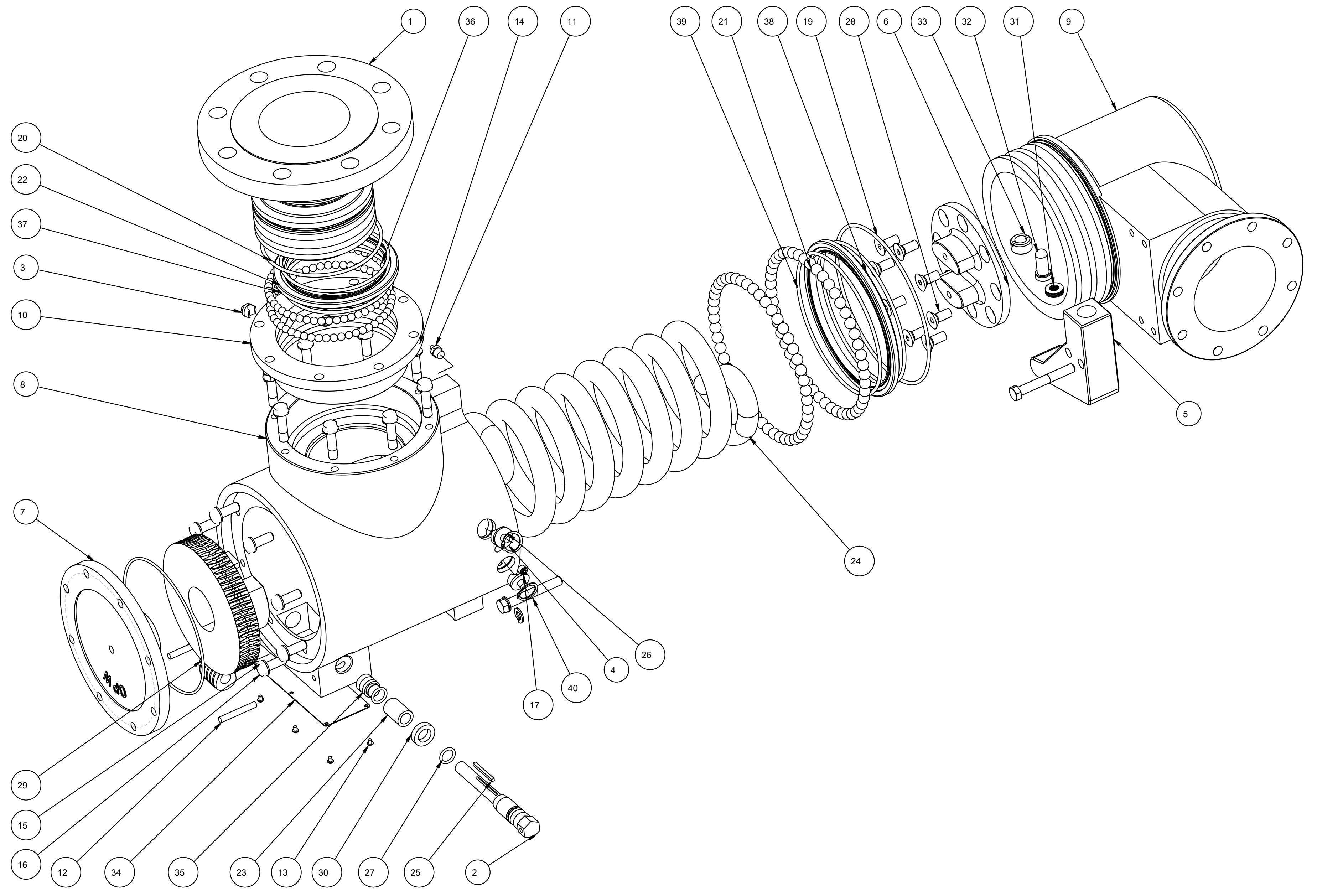
C

D

E

THIS DRAWING IS NOT TO BE SCALED. FOR ADDITIONAL INFORMATION, PLEASE CONTACT OUR ENGINEERING DEPT.

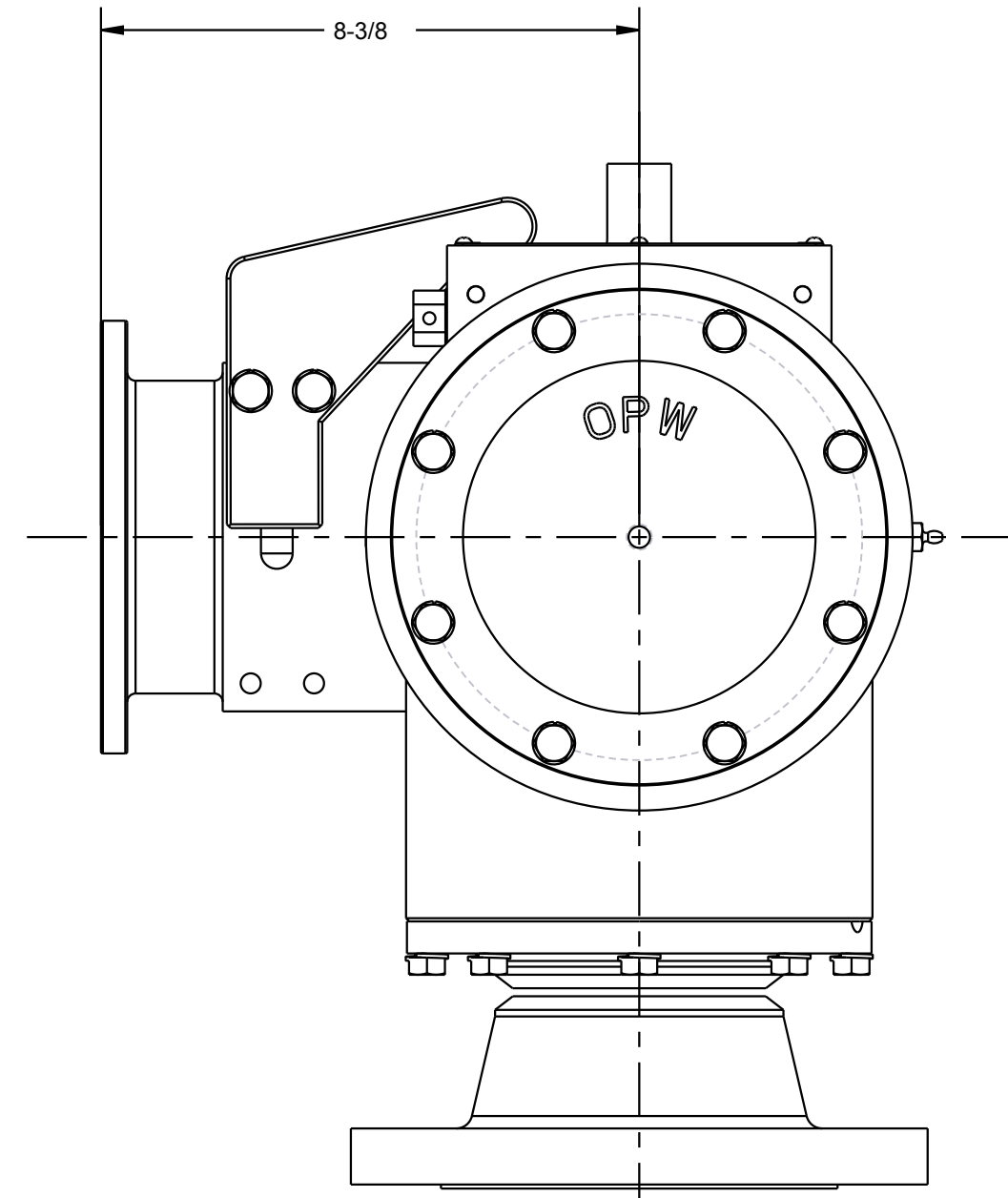
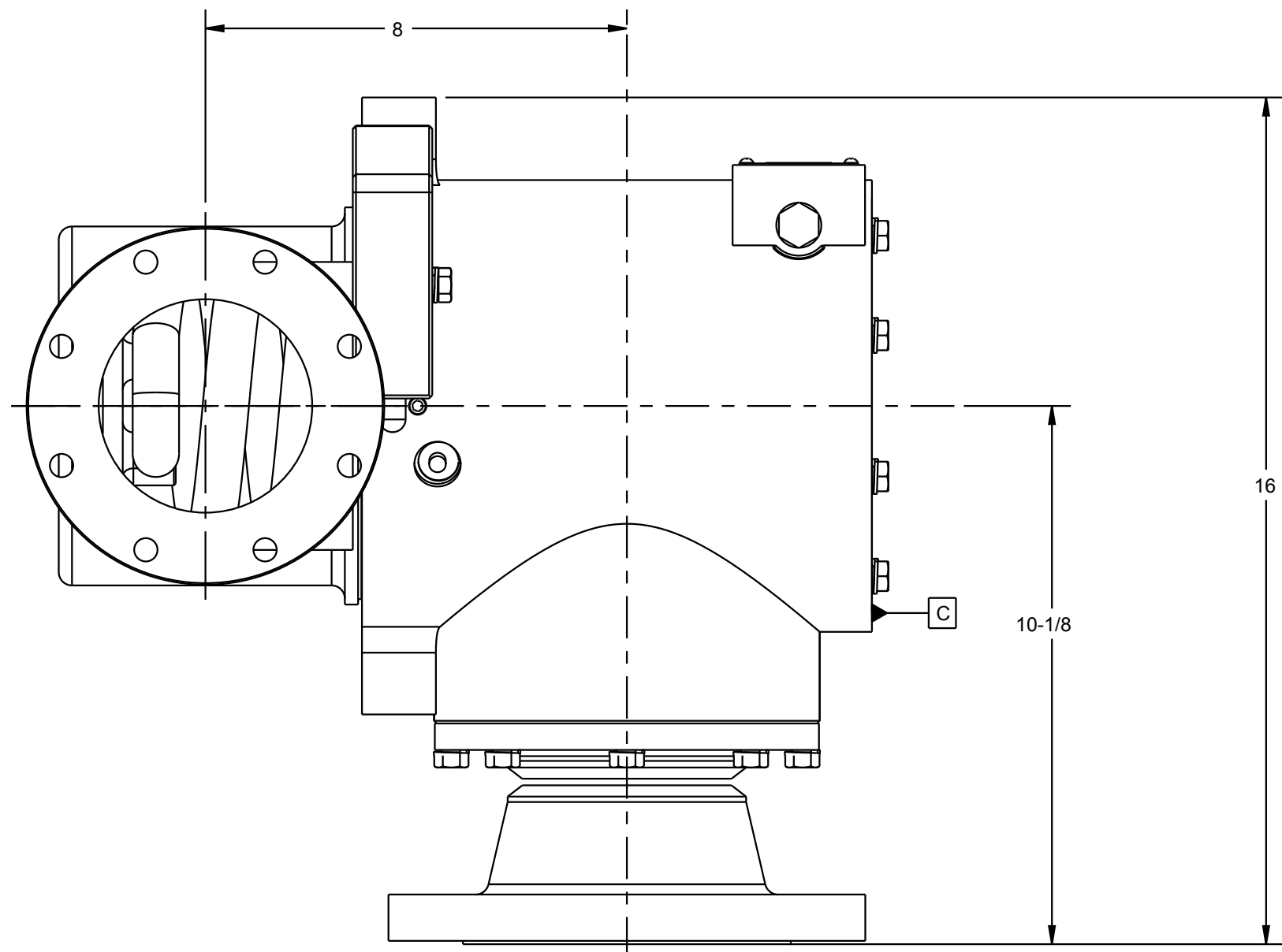
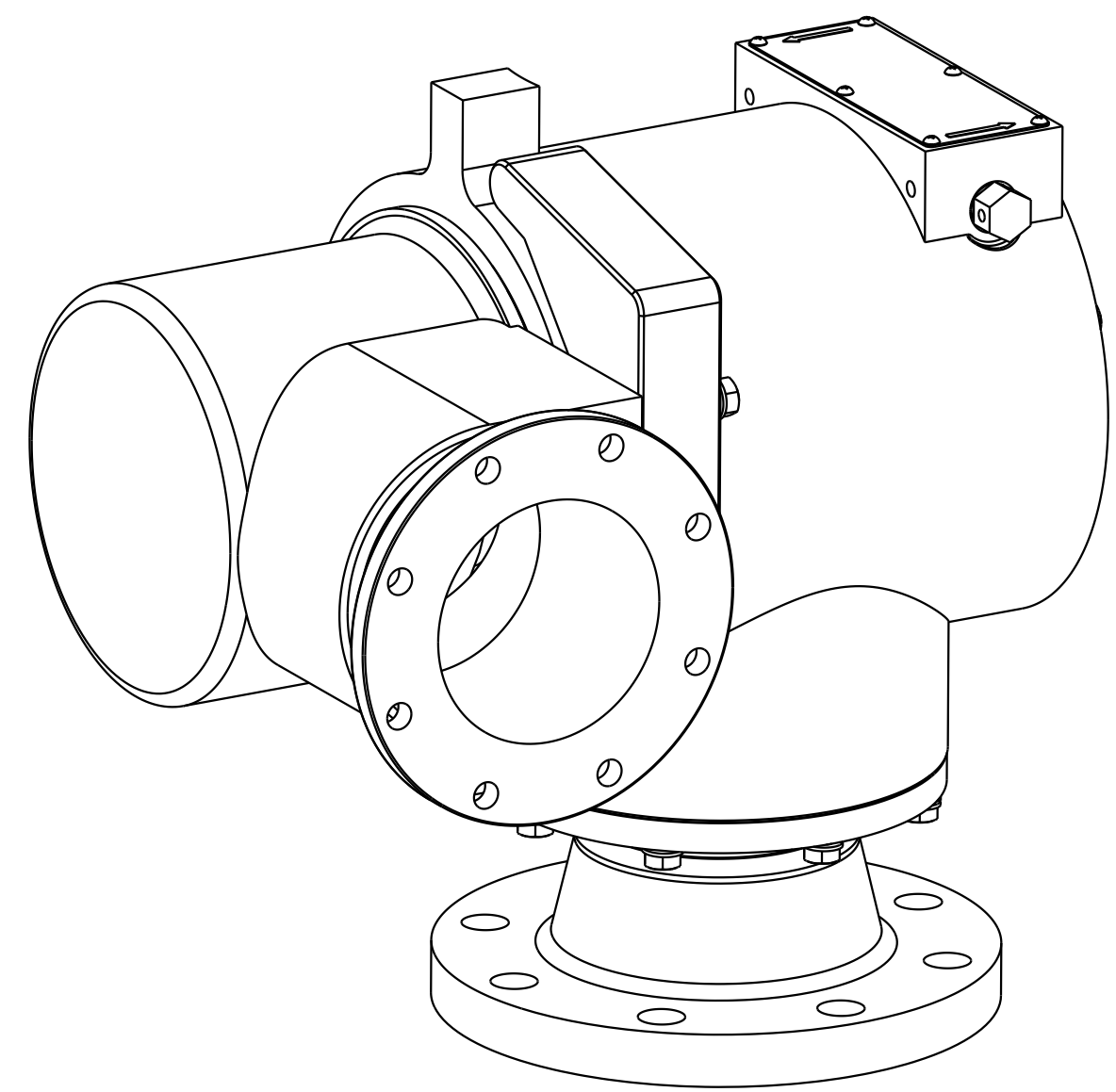
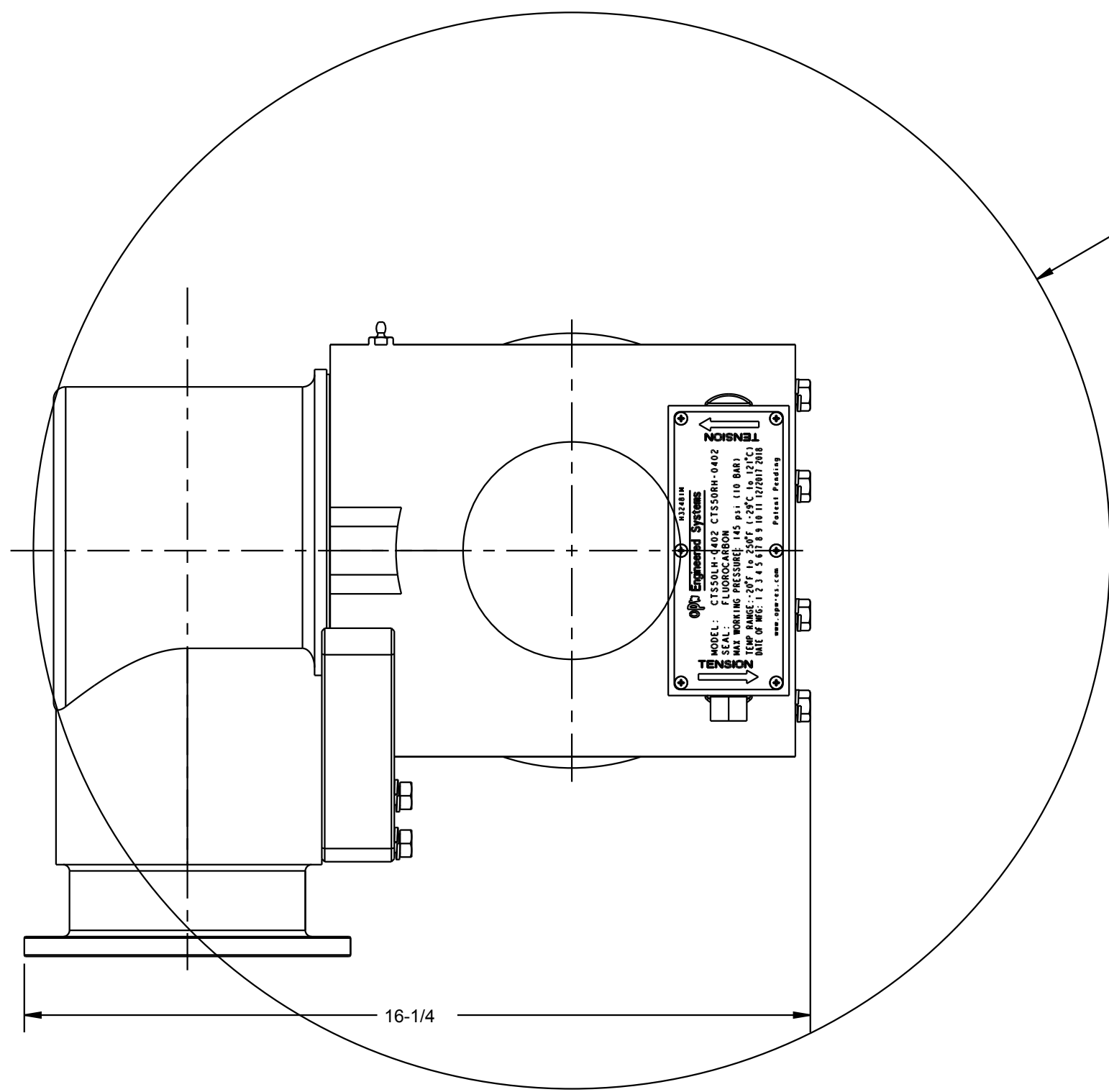
REVISIONS					
LTR	ECN #	DESCRIPTION	DRAWN	APPROVED	DATE
REL	42362	RELEASE	JSC		-



SIGNATURES		DD-MMM-YYYY	DESCRIPTION: 4", CTS, ASSEMBLY, RIGHT HAND, DUAL RACE		
DRAWN: JSC		01-Aug-2017	REV: REL	PART NUMBER:	
CONFIDENTIAL		THIS DOCUMENT CONTAINS INFORMATION WHICH IS PROPRIETARY TO OPW, AND SHOULD BE PROTECTED ACCORDINGLY.	SIZE: C	CTS50RH-0402	
			SCALE: 0.350	SHEET 2 OF 3	
			Lebanon, Ohio 45036 USA		3D GENERATED DRAWING

THIS DRAWING IS NOT TO BE SCALED. FOR ADDITIONAL INFORMATION, PLEASE CONTACT OUR ENGINEERING DEPT.

REVISIONS					
LTR	ECN #	DESCRIPTION	DRAWN	APPROVED	DATE
REL	42362	RELEASE	JSC		-



SIGNATURES		DD- <del>MMM</del> -YYYY	DESCRIPTION: 4", CTS, ASSEMBLY, RIGHT HAND, DUAL RACE		
DRAWN: JSC		01-Aug-2017	REV: REL	PART NUMBER:	
CONFIDENTIAL		THIS DOCUMENT CONTAINS INFORMATION WHICH IS PROPRIETARY TO OPW, AND SHOULD BE PROTECTED ACCORDINGLY.	SIZE: C	CTS50RH-0402	
			SCALE: 0.350	SHEET 3 OF 3	
			Lebanon, Ohio 45036 USA		3D GENERATED DRAWING